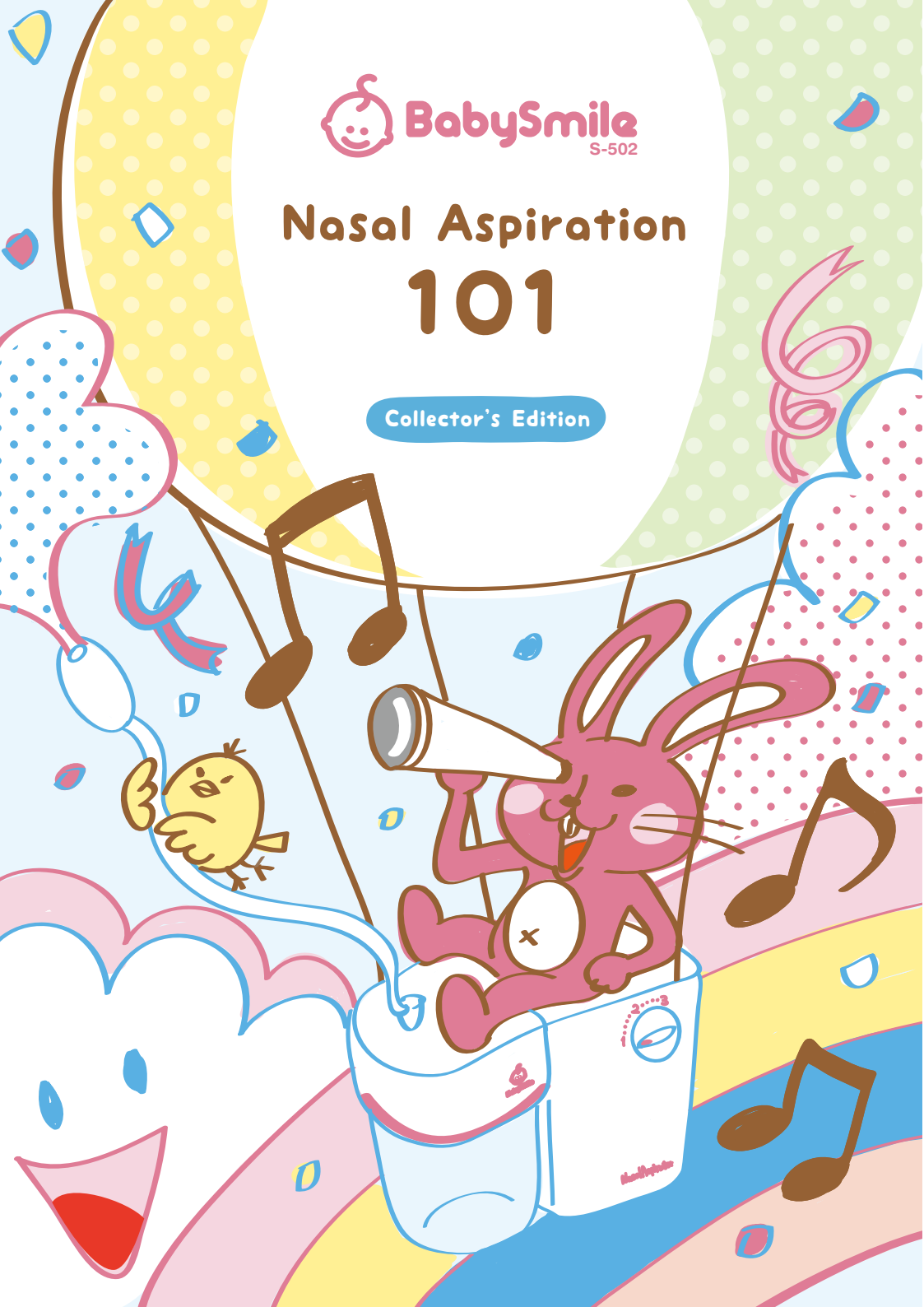




# Nasal Aspiration 101

Collector's Edition





# Let's get started

## Things to prepare



# Before Aspirating Mucus

## Aspirating the Baby's Mucus for The First Time


First, try it yourself. It is very important to get hang of the aspiration. Please follow instructions in the next page, and practice yourself how to insert the silicone tip and aspirate. The baby feels secure when seeing you practice.



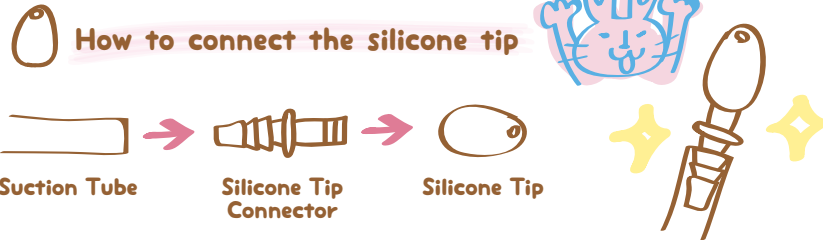
### ! Caution

In order to avoid infection, please use one silicone tip per infant.

Do not scare the baby

Please show the baby how good you are after getting used to it. 

## Getting the Aspirator Ready



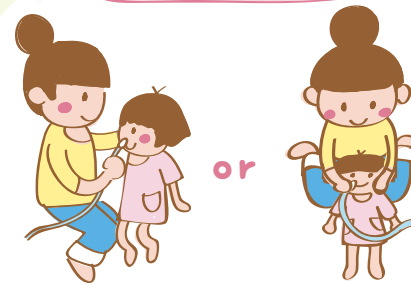
### ! Caution

Please use silicone-made suction tips for your safety. Glass-made suction tips can be easily broken or blown out and may cause bodily injury.



## The best posture for mucus aspiration

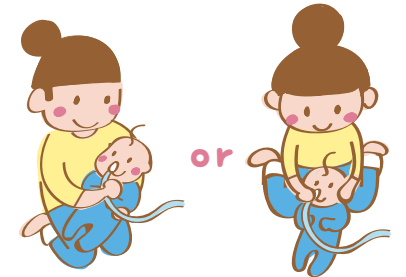
### For Children



Sit face to face with the child and hold the back of child's head to fix the best position.

Lay down the child and put the child's head between the knees to fix the best position.

### For Suckling Infants



Hold the infant as if to bottle-feed and fix the head.

Lay down the infant and put the infant's head between the knees to fix the best position.

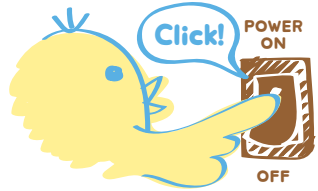
See? It's not scary, is it?





# Let's Aspirate Mucus

**1** Turn the power ON.



The power switch is located on the rear of the unit.

**2** Place a finger over the silicone tip hole.



**3** Optimizing the suction power by turning the regulator knob in order of "1", "2" and "3".



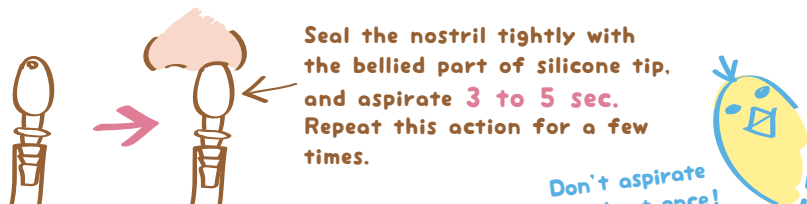
Please optimize the suction power from the lowest since the optimized suction power differs according to the condition of mucus.

**4** Aspirate some water.



Wetting the inside to suction tube prevents mucus from being stuck and caked.

**5** Aspirating Mucus. Insert the silicone tip into the nostril gently.



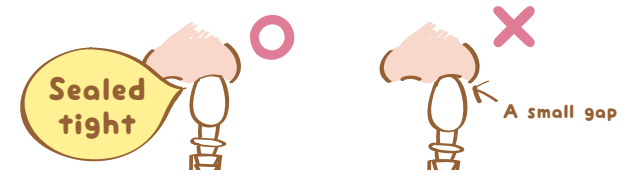
Don't aspirate too much at once!

# Tips for Mucus Aspiration



POINT

**1** Insert the silicone tip into the nostril tightly.



Mucus can not be aspirated thoroughly if there is a small gap between the nostril and the silicone tip since air goes into from the gap.

POINT

**2** Aspirate little by little to locate the mucus accumulated area by changing the angle of silicone tip.



Do not insert the silicone tip into the nostril too hard. Failure to do so may cause mucosal injury. Observe the infant well while aspirating, and stop the aspiration immediately if the infant is complaining of pain or nosebleed.

POINT

**3** Aspirate on Perfect Timing



After taking a bath

Warming up around the infant's nose area with a facial steamer

Right after having a hot meal

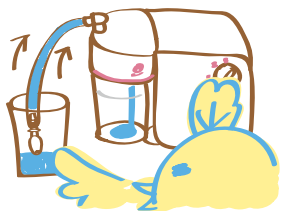
Warmed up nasal cavity makes the aspiration easier!



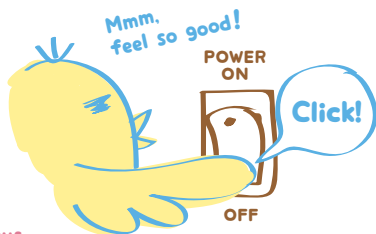


# After the Aspiration

**1** Aspirate some water, and turn the power OFF.



This is to clear off the remained mucus in the suction tube to the canister.



**2** Let's clean up.

Follow the instructions in , and clean the canister, suction tube and canister cover, and dry them well.

What User's Manual?!



What? You lost it?



Please keep the User's Manual on file.



Please make sure to dry the main unit and accessories thoroughly before storing. Storing without drying may cause the malfunction.

**!** Do not rotate the canister when connected to the main unit.

Failure to do so may cause suctioned materials and water in the canister penetrate into the main unit, and may cause a malfunction.

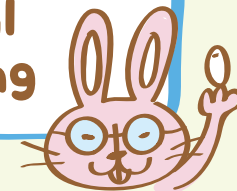


**!** Do not tilt this unit.

Failure to do so may cause suctioned materials and water in the canister penetrate into the main unit, and may cause a malfunction.



# The parts requiring special attention when disinfecting



**NG**



The parts **CAN NOT** be applied for boiling disinfection.



Silicone Tip Connector



Suction Tube Connector



Canister Cover



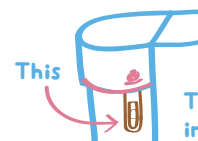
Canister



Float



Float Cover



This

The float is located inside of the float cover

**OK!**



Disinfection ethanol or chlorine disinfectant can be applied to all parts!



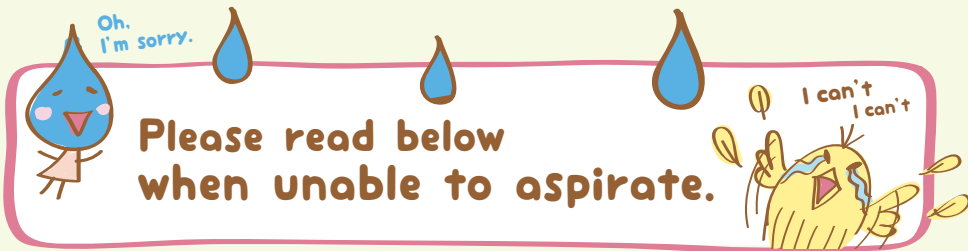
## Precautions for those who use dishwashers



Please do not use a dishwasher for washing the parts and boiling disinfection.

Most parts of BabySmile S-502 may be deformed by washing and boiling disinfection using the dishwasher.





**Check1**



**Can you hear the sound of pump that is working?**

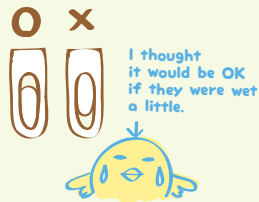
If you can not hear the working sound of pump at all, the cord of AC adapter maybe broken inside. Please replace the AC adapter if the LED on the AC adapter is not lit on. The AC adapter needs to be purchased separately.

**Check2**



**Is the float stuck on the upper side of the float cover?**

If the float is stuck on the uppers side of the float cover, the float-shut off valve can be sealed by the float and the suction may be stopped. This tends to be occurred when parts are wet. Please assemble the aspirator after drying all parts thoroughly.



**Check3**



**Do you have all parts required for operating the unit?**

Please make sure if you have all parts required for operating the unit. Especially, canister O-Ring (2 pcs), suction tube connector O-Ring (2 pcs) and canister cover connector O-Ring (2 pcs) are not placed correctly, air leakage may occur and cause the suction to be interfered.



**Check4**

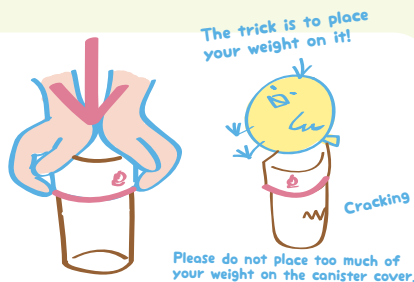


**Are all parts connected properly?**

Please refer to the following instructions and conduct the air leakage testing to make sure air is not leaking.

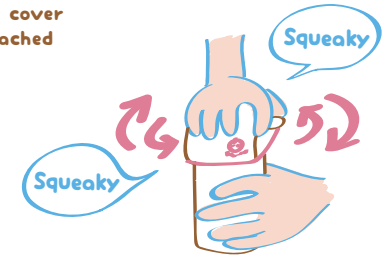
**Attaching the Canister Cover**

**1** Place the canister to the canister cover in vertical direction to be attached.



**2** Please be sure to confirm the canister cover and the canister have been firmly attached by turning the canister cover.

If the canister O-Ring attached to the canister is too loose, the best performance of suction can not be achieved. We recommend purchasing "Accessory Set for S-502 Canister" if you feel the canister O-Ring is too loose.



**Attaching the Canister**

**1** Insert the canister cover connector into to the main unit correctly by sliding the canister cover straight horizontally.

If you don't feel the canister cover connector has been attached to the main unit thoroughly all the way inside, wet the canister cover connector O-Ring with water and try again to attach to the main unit.

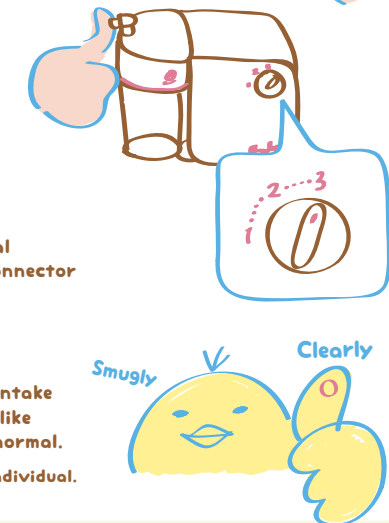
The unit can be operated normally if the gap between the canister cover and the main unit is around 0.2 in.



**How to Check the Suction Power**

- 1** Turn the power ON.
- 2** Turn the regulator knob to set the suction power level "3" .
- 3** Keep running the unit as **2** . and seal the intake hole of the suction tube connector with your ball of thumb.

- 4** Keep suctioning for 10 seconds, feeling negative pressure on your ball of thumb, and if the red pattern of intake hole stays on the ball of your thumb like a circle clearly, the suction power is normal. The clearness of red circle may vary by individual.



# Handling precautions for closing the lid of the canister



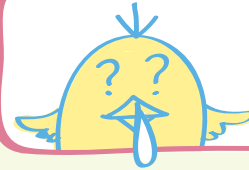
**Do not** rotate the canister when connected to the main unit.

Failure to do so may cause suctioned materials and water in the canister penetrate into the main unit, and may cause a malfunction.

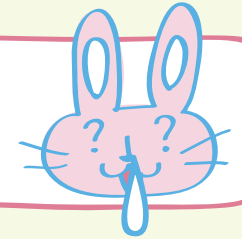


**Do not** tilt this unit.

Failure to do so may cause suctioned materials and water in the canister penetrate into the main unit, and may cause a malfunction.



## Q & A for Nasal Aspiration



Isn't it bad for the ears?



If only one of the nostrils is stuffed, there is no bad effect on the ears. However, if both nostrils are stuffed, long periods of suction will burden the ears. Rather, do short repetitions (3 to 5 sec.) for several times in each nostril. Suction out the mucus a little at a time and observe the infant's condition while suctioning. If the infant experiences pain or discomfort, stop immediately.



My child is still a suckling infant. Would it be dangerous to increase the suction power?



There is no clear optimized suction power for certain age since the infant's build, physical condition and mucus condition vary. Start with the lowest suction power, and, observing the infant's condition while suctioning, gradually adjust to higher suction power. Long periods of suction will burden the ears. Rather, do short repetitions for several times in each nostril. Please consult your physician before using BabySmile S-502.



Is there any condition in which I should not aspirate the mucus?



Do not aspirate the mucus if there are wounds and inflammation on the mucosa inside the nostril. Also, do not use the unit after nosebleed.





**Baby Health Care, Inc.**

260 Newport Center Drive, STE204  
Newport Beach, CA 92660

[www.babyhealthcare.us](http://www.babyhealthcare.us)