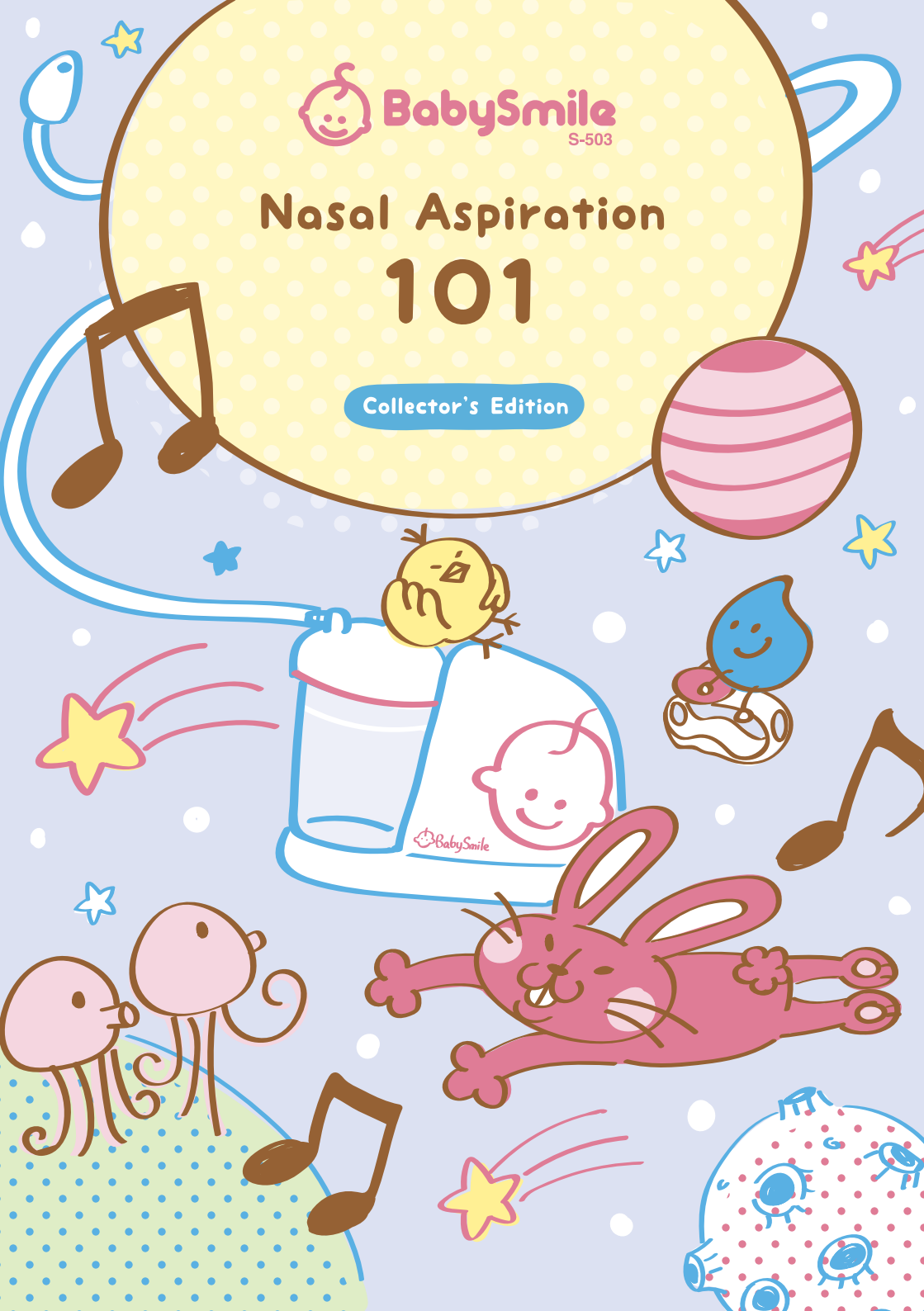




# Nasal Aspiration 101

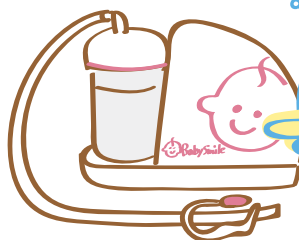
Collector's Edition





# Let's get started

## Things to prepare



I need this first, and then...

**BabySmile S-503**



Hmmm, that's about it...

**Some water**  
(1~1.7 fl oz)

## Getting the Aspirator Ready



How to connect the silicone tip



Eureka!



Suction Tube Stopper (BabySmile Clip) and Suction Tube



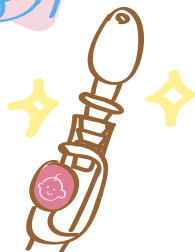
Silicone Tip Connector



Silicone Tip

Connect the side of suction tube with BabySmile Clip.

Connect the jagged side to the suction tube connector to the suction tube.



## Caution

Please use silicone-made suction tips for your safety.

Glass-made suction tips can be easily broken or blown out and may cause bodily injury.



Snap!



# Before Aspirating Mucus

## Aspirating the Baby's Mucus for The First Time

First, try it yourself.

It is very important to get the hang of the aspiration. Please follow instructions in the next page, and practice yourself how to insert the silicone tip and aspirate. The baby feels secure when seeing you practice.



Do not scare the baby

**! Caution**

In order to avoid infection, please use one silicone tip per infant.

Please show the baby how good you are after getting used to it.



### The best posture for mucus aspiration

#### For Children



Sit face to face with the child and hold the back of child's head to fix the best position.

or



Lay down the child and put the child's head between the knees to fix the best position.

#### For Suckling Infants



Hold the infant as if to bottle-feed and fix the head.

or



Lay down the infant and put the infant's head between the knees to fix the best position.

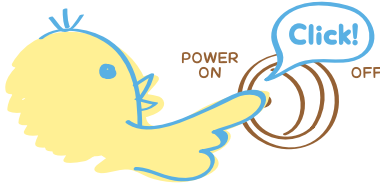
See?  
It's not scary, is it?





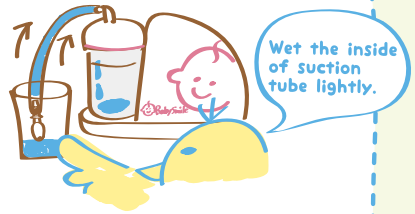
# Let's Aspirate Mucus

**1** Turn the power ON.



The power switch is located on the side of the unit.

**2** Aspirate some water. (0.3~0.7 fl oz)

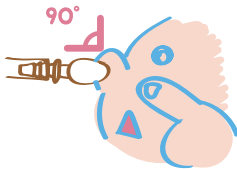


Wetting the inside of suction tube prevents mucus from being stuck and caked.

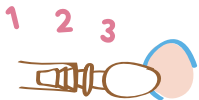
**3** Insert the silicone tip into the nostril and suction mucus.



First, make the nostril wider by pulling the facial area around the side of nose tip toward the outside.



Be sure to insert the silicone tip into the nostril at a 90-degree angle to the face.



Try 3 to 4 seconds of short suction several times repeatedly.

Don't aspirate too much at once!



\*Do not suction more than 5 seconds.

\*Insert the silicone tip gently into the nostril: failure to do so may cause bodily injury.

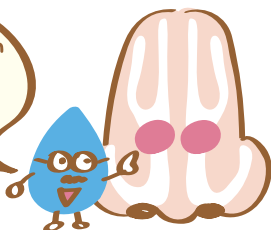
\*Observe the infant well while aspirating, and stop the aspiration immediately if the infant is complaining of pain or nosebleed.

# Tips for Mucus Aspiration

POINT

**1** Aim "The Best Silicone Tip Position for Suctioning Mucus" and move the silicone tip.

The best position for suctioning mucus is located above the tip of nose.



The inside of nose is bumpy though.

POINT

**2** Aspirate on Perfect Timing



After taking a bath



Warming up around the infant's nose area with a facial steamer



Right after having a hot meal

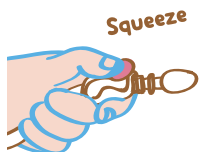
Warmed up nasal cavity makes the aspiration easier!



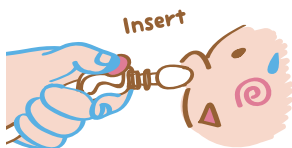
## For Persistent Sticky Mucus



One hand easy operation by using the BabySmile Clip!  
Even slimy mucus can be suctioned out easily.



Press the BabySmile Clip and hold for 5 seconds.



Keep pressing it and insert into the nostril.



Release the BabySmile Clip, and mucus can be suctioned out. It makes the baby feel better.





# After the Aspiration


**1** Aspirate some water, and turn the power OFF.



For quick disinfection and dry, apply small amount of the disinfection ethanol thoroughly inside the suction tube!



This will help remove the mucus inside the suction tube.

**2** Let's clean up.  
Follow the instructions in , and clean the canister, suction tube and canister cover, and dry them well.  
Let's clean thoroughly at least once a day.

The silicone tip and the suction tube connector should be cleaned every time.



What User's Manual ?!



What? You lost it?



Please make sure to dry the main unit and accessories thoroughly before storing. Storing without drying may cause a malfunction.

Please keep the User's Manual on file.



## Precautions for those who use dishwasher



Please do not use the dishwasher for washing the parts and boiling disinfection.

Most parts of BabySmile S-502 may be deformed by washing and boiling disinfection using the dishwasher.



# For preventing the unit troubles, please observe these at all times



**Do not conduct boiling disinfection.**

Do not use the dishwasher and microwave for boiling disinfection; failure to do so may cause the deformation of parts.

(Disinfectants of chlorine types and ethanol types can be applied.)



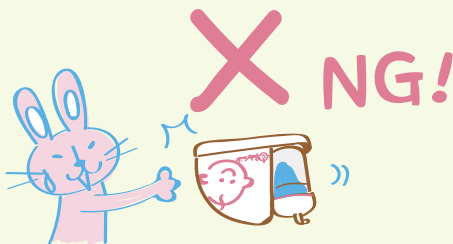
**Do not rotate the canister when connected to the main unit.**

Failure to do so may cause suctioned materials and water in the canister penetrate into the main unit, and may cause a malfunction.

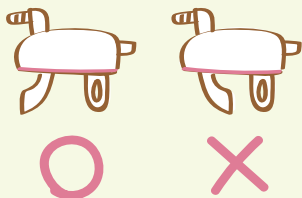


**Do not tilt this unit.**

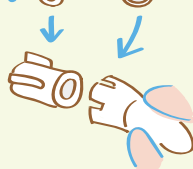
Failure to do so may cause suctioned materials and water in the canister penetrate into the main unit, and may cause a malfunction.



**Be sure to put the silicone drainpipe correctly.**



Align  with .





ホホホ

Please read below  
when unable to aspirate.



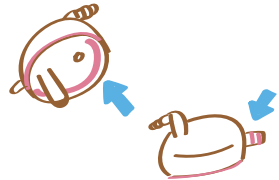
### First to Check the Suction Power

- 1 Turn the power ON.
- 2 Seal the intake hole of the main unit with a ball of finger and turn "ON" the power switch.
- 3 Keep suctioning for 10 seconds and check if the red pattern of intake hole stays on the ball of finger.

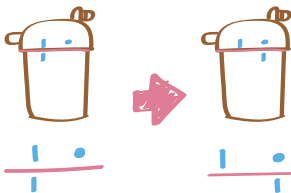


### Second Set the Canister Properly

- 1 Take the canister cover from the canister.
- 2 Check if the canister o-ring and the suction tube connector o-ring are set. Make sure there are no twists, folds, or cracks.



- 3 Align "I" of the canister cover with "I" of the canister, and then, turn the canister cover to the position where "●" of the canister cover and "I" of the canister are aligned.



Make sure that  
the canister cover  
is not slanted.





## Finally

## Check the Suction Power Again

- 1 Connect the suction tube, silicone tip connector, silicone tip.
- 2 Prepare 9.13 fl oz (270mL) of water in a cup. \*Be careful not to exceed the maximum line!
- 3 If the water is suctioned in about 10 seconds, there is no problem with the suction power.



### Check1



#### Can you hear the pump that is running?

If you can not hear the working sound of pump at all, the cord of AC adapter maybe broken inside. Please replace the AC adapter if the LED on the AC adapter is not lit on.  
The AC adapter needs to be purchased separately.

### Check2



#### Is the float placed at the bottom of the float cover?

If the float is stuck on the uppers side of the float cover, the float-stopper can be sealed by the float and the suction may be stopped. This tends to be occurred when parts are wet. Please assemble the aspirator after drying all parts thoroughly.



I thought it would be OK if they were wet a little.



### Check3



#### Do you have all parts required for operating the unit?

Please make sure if you have all parts required for operating the unit. Especially, canister O-Ring (2 pcs), suction tube connector O-Ring (2 pcs) and canister cover connector O-Ring (2 pcs) are not placed correctly, air leakage may occur and cause the suction to be interfered.

Oh, Gee.

Is this the rubber thing you are talking about?



### Check4

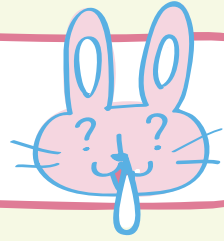


#### Are all parts connected properly?

Please refer to the User's Manual for the details.

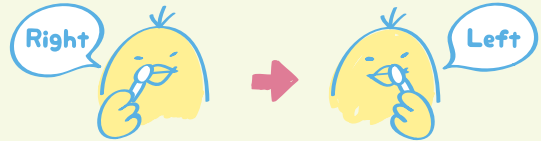


## Q & A for Nasal Aspiration



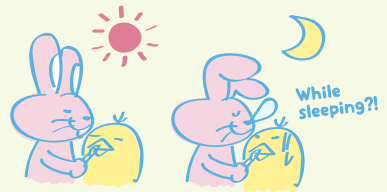
**Q** Isn't it bad for ears?

**A** If only one of the nostrils is stuffed, there is no bad effect on the ears. However, if both nostrils are stuffed, long periods of suction will burden the ears. Rather, do short repetitions (3 to 4 sec.) for several times in each nostril. Suction out mucus a little at a time and observe the infant's condition while suctioning. If the infant experiences pain or discomfort, stop immediately.



**Q** Can I aspirate as many times as desired?

**A** How many times should the suctioning be performed per day? Waking up in the morning, after taking a bath, and before going to bed, the suctioning should be performed frequently whenever mucus is bothersome.



**Q** Is there any condition in which I should not aspirate mucus?

**A** Do not aspirate mucus if there are wounds and inflammation on the mucosa inside the nostril. Also, do not use the unit after nosebleed.



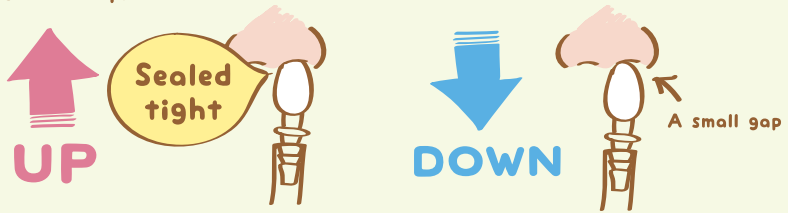
**Q** Why is nasal care necessary?

**A** Babies cannot blow their noses by themselves. S-503 can even suction persistent sticky mucus and help prevent mucus go into the ear and the throat. It also helps a baby breathe easier.



**Q** How should the suction power be lowered?

**A** The suction power gets increased gradually when the nostril is sealed off tightly with the silicone tip, and it gets decreased immediately when the silicone tip has been removed from the nostril. Optimize the suction power by inserting and removing the silicone tip.



**Q** Can S-503 be used for adults?

**A** Moms, dads, and all adults can use this unit.  
\*To prevent infection, each user should use his or her own silicone tip.



**Q** Would that be OK to cut the suction tube?

**A** Yes, it would be OK to cut since it doesn't affect the suction power. Optimize the length as desired.



**Q** Can the suctioning be performed without the BabySmile Clip?

**A** The suction power of S-503 has been configured for suctioning mucus at the factory. The suctioning can be done thoroughly without the BabySmile Clip.





For the detailed information of S-503,  
please visit us at:

[www.babyhealthcare.us](http://www.babyhealthcare.us)



Search for **Baby Health Care**



## Baby Health Care, Inc.

620 Newport Center Drive, STE 1100,  
Newport Beach, CA 92660

Customer Support

[Support@babyhealthcare.us](mailto:Support@babyhealthcare.us)